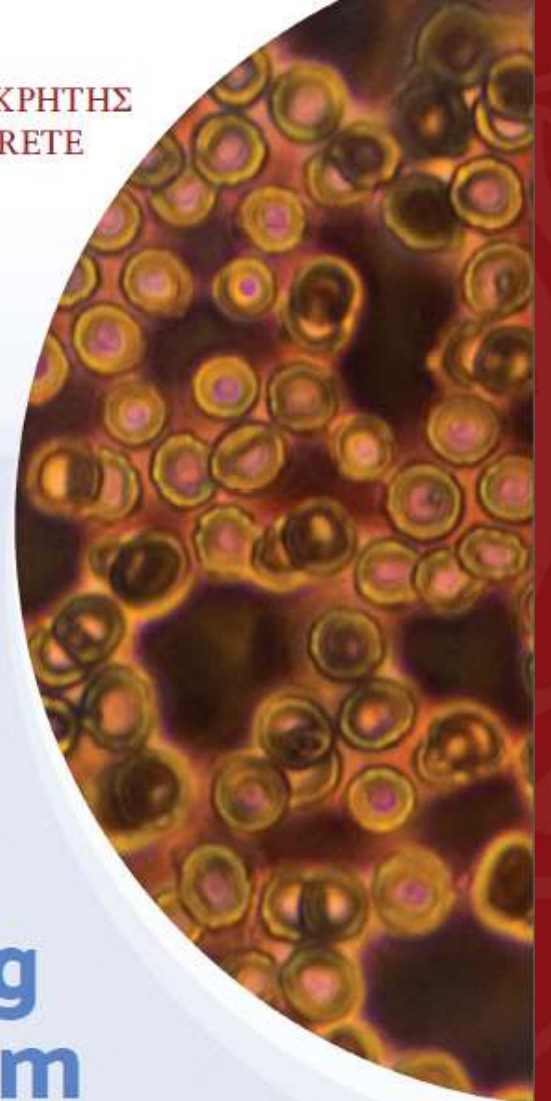


Biomedical Engineering (BME) MSc program

Kostas Perisinakis,
Professor of Medical Physics and
Head of Radiology Division
Medical School, University of Crete
Director of BME program



ΠΑΝΕΠΙΣΤΗΜΙΟ ΚΡΗΤΗΣ
UNIVERSITY OF CRETE

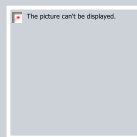


**Biomedical
Engineering
MSc program**

Why study Biomedical Engineering?



Modern - Interdisciplinary field



Combines engineering with medical and biological sciences



Designing and developing

Medical equipment
Devices
Pharmaceuticals
Software tools and methods to be used in healthcare

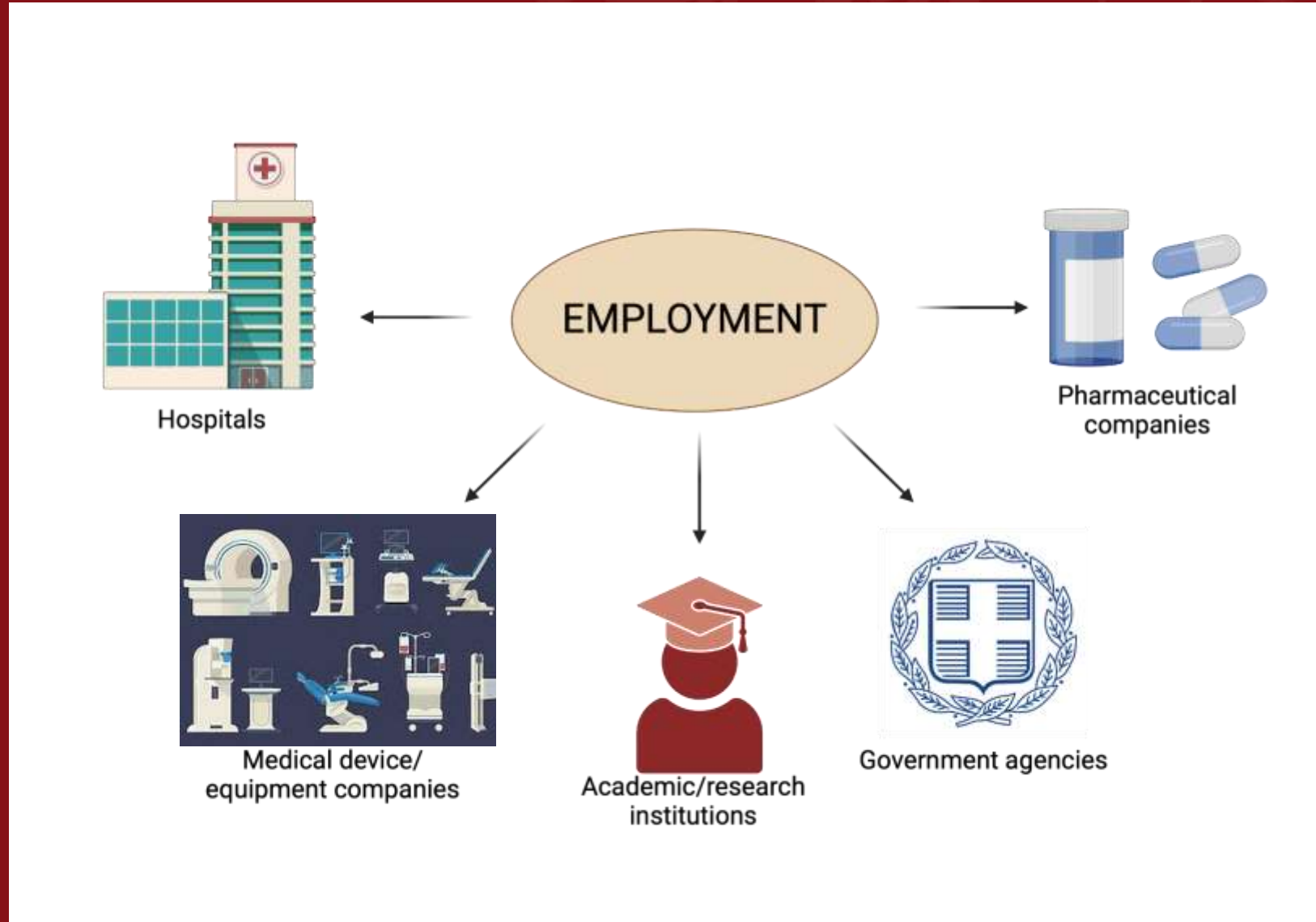


Why study Biomedical Engineering?

Biomedical engineers may

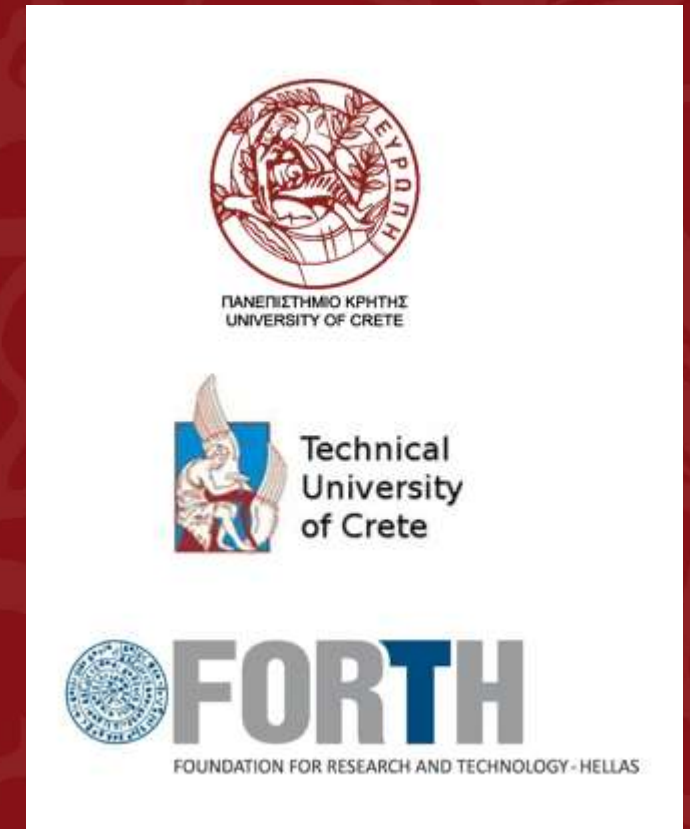
- Collaborate with multidisciplinary teams to address healthcare challenges
- Design and develop innovative medical equipment
- Conduct research on new medical technologies/methods
- Ensure safe, efficient, and reliable operation of biomedical instrumentation (maintenance, calibration, safety)
- Guarantee regulatory compliance for all medical devices and equipment
- Train clinicians and medical personnel on proper equipment usage

Employment prospects



Our Postgraduate Program in "Biomedical Engineering" which leads to a MSc Diploma is jointly organized by

- The University of Crete
 - Medical School
 - Department of Computer Science
 - Department of Materials Science and Technology
- The Technical University of Crete
 - School of Electrical and Computer Engineering
- The Foundation for Research and Technology - Hellas (FORTH)



Program objective and educational targets

➤ The objective of the MSc program is to provide advanced education and required qualifications to its graduates to meet the ever-increasing demand for high level specialization in the field "Biomedical Engineering"

➤ Our program's curriculum is intended to develop a solid background and professional skills in the following modern biomedical engineering subsectors:

- Biomaterials
- Biosensors
- Biophotonics
- Tissue engineering
- Regenerative Medicine
- Nanotechnology
- Pharmaceutical Technology
- Molecular Diagnostics
- Medical Lasers
- X-ray and Computed Tomography Imaging
- Magnetic Resonance and Ultrasound Imaging
- Radiation Therapy
- Nuclear Medicine Imaging and Therapy
- Advanced Microscopy
- Biomedical Image and Signal Analysis

Organization of studies

- The **official language** of the program is **English**
- The MSc Biomedical Engineering program is organized into five trimesters each lasting 8 weeks (lectures plus exams)
 - The **1st trimester** offers introductory courses providing basic knowledge on Biology, Physiology, Anatomy and Measuring Biosignals
 - The **2nd, 3rd and 4th trimesters** offer courses on the three major sectors of the program
 - Biofabrication, Molecular Diagnostics and Therapy (**2nd trimester**),
 - Radiation Imaging/Therapy and Biomedical Imaging (**3rd trimester**)
 - Medical Information Systems (**4th trimester**)
 - The **5th trimester** is devoted to the first level thesis and to seminars and projects on Business and Innovation Management

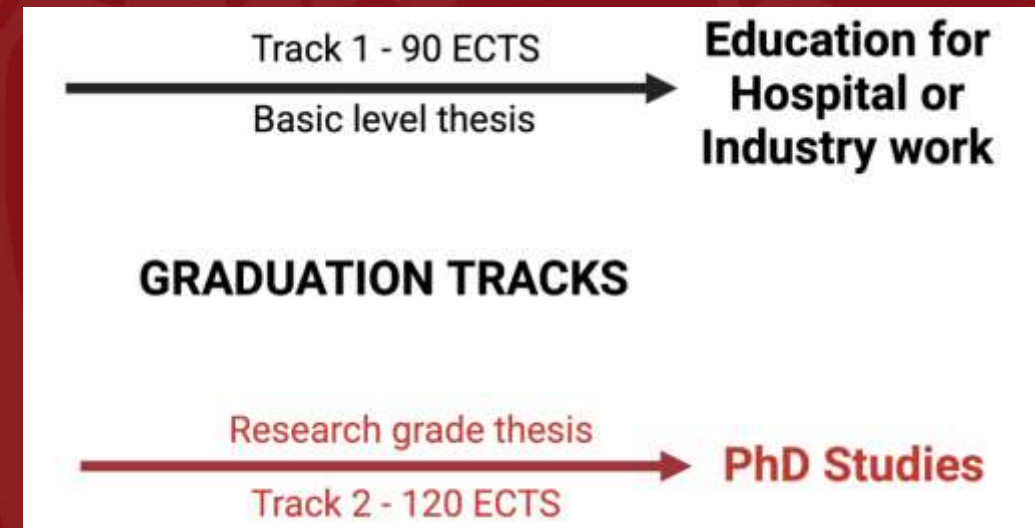
Organization of studies

- Lectures, labs and seminars will be
 - provided during afternoon (15.00-20.00)
 - at the facilities of the University of Crete campus in Heraklion or the nearby facilities of the Foundation for Research and Technology-Hellas (FORTH)
 - require attendance with physical presence



Duration of studies

- Our program is flexible in the sense that it offers two graduation tracks, one with **90 ECTS credits** (includes a first level thesis) and one with **120 ECTS credits** (includes a research grade thesis)
- The first track is intended to educate graduate students willing to develop a career as biomedical engineer employed by hospitals or industry
- The second track is designed to prepare graduate students willing to continue in a PhD program, through a research grade thesis conducted in one of the affiliated research labs
- The minimum total duration of the degree is **15 months (90 ECTS)** which may be



The faculty of BME MSc program



Emmanuel Stratakis

Research Director, Institute of Electronic Structure and Laser, Foundation for Research and Technology-Hellas, Heraklion, Crete
Executive Committee Member of BME program



Vangelis Sakkalis

Research Director, Institute of Computer Science, Foundation for Research and Technology-Hellas, Heraklion, Crete
Executive Committee Member of BME program



Michail Lagoudakis

Associate Professor in the School of Electrical and Computer Engineering (ECE) at the Technical University of Crete (TUC)
Executive Committee Member of BME program



Kostas Perisinakis

Professor of Medical Physics
Head of Radiology Division in the Medical School of the University of Crete
Director of BME program



Costas Balas

Professor in the School of Electrical and Computer Engineering (ECE) - Technical University of Crete (TUC)
Executive Committee Member of BME program



Maria Chatzinikolaidou

Associate Professor of Biomaterials in Bioengineering in the Department of Materials Science and Technology of the University of Crete
Executive Committee Member of BME program



Haridimos Kondylakis

Associate Professor of Big Data Engineering at Computer Science Department, University of Crete
Executive Committee Member of BME program

The faculty of BME MSc program



John Damilakis

Professor and Chairman of the Department of Medical Physics Medical School, University of Crete



Giannis Zacharakis

Principal Researcher at IESL – FORTH, and Director of the Laboratory for Biophotonics and Molecular Imaging



Thomas Maris

Professor of Medical Physics Medical School of the University of Crete



Apostolos Karantanas

Professor and Chairman of the Department of Medical Imaging Medical School, University of Crete



Elena Kranioti

Associate Professor of Forensic Sciences, Medical School of the University of Crete



Charalambos Pontikoglou

Associate Professor of Hematology, Medical School of the University of Crete

The faculty of BME MSc program



Panagiotis Tsakalides

Professor of Computer Science, Computer Science Department of the University of Crete



Dimitris Plexousakis

Professor of Computer Science and former Chair of the Department of Computer Science, University of Crete



George Liapakis

Professor of Pharmacology, Medical School of the University of Crete



Kostas Marias

Associate Professor in Medical Image Processing, Dept. of Electrical & Computer Engineering, Hellenic Mediterranean University



Ioannis Charalambopoulos

Professor of Pharmacology Medical School of the University of Crete



Yannis Papaharilaou

Research Director and Head of the CardioVascular BioMechanics Lab Institute of Applied and Computational Mathematics of the Foundation for Research and Technology - Hellas (IACM-FORTH)

The faculty of BME MSc program



John Iliopoulos

Professor of Bioinformatics
and Head of the Computational
Biology Group
Medical School, University of
Crete



Maria Vamvakaki

Professor of Biomaterials in
Bioengineering Department of
Materials Science and
Technology of the University
of Crete



Maria Raissaki

Professor of Radiology,
Medical School of the
University of Crete



Efrosini Papadaki

Associate Professor of
Radiology,
Medical School of the
University of Crete



Michael Mazonakis

Associate Professor of Medical
Physics Medical School,
University of Crete



Michail Klontzas

Assistant Professor of
Radiology,
Medical School of the
University of Crete

The faculty of BME MSc program



Dimitris Vlassopoulos
Professor in the Materials
Science and Technology
Department
University of Crete



George Tzagkarakis
Principal Researcher
Signal Processing
Laboratory (SPL) at FORTH-ICS



Daphne Bazopoulou
Assistant Professor of Biology
Biology Department of the University
of Crete

Eligibility

- Bachelor's or an integrated Master's degree in **engineering** **OR** in **natural sciences** **OR** in **life sciences** from an internationally recognized university
- Candidates not yet graduated during the admission period are also eligible applicants, provided that they expect to have their first degree awarded until the end of October.
- The program will accept students from both the European Economic Area (EEA) (tuition fees=1500 €) and the non-EEA countries (tuition fees=3000 €)

How to apply

- Call Announcement: Applications open in April on our website.
- Information Provided: Entry criteria, application process, tuition fees, and deadlines
- Online Submission: Apply and upload documents at postgrad.cict.uoc.gr



ΕΛΛΗΝΙΚΗ ΔΗΜΟΚΡΑΤΙΑ
ΠΑΝΕΠΙΣΤΗΜΙΟ ΚΡΗΤΗΣ
ΙΑΤΡΙΚΗ ΣΧΟΛΗ



HELLENIC REPUBLIC
UNIVERSITY OF CRETE
MEDICAL SCHOOL

ΔΙΔΡΥΜΑΤΙΚΟ ΠΡΟΓΡΑΜΜΑ ΜΕΤΑΠΤΥΧΙΑΚΩΝ
ΣΠΟΥΔΩΝ «ΒΙΟΙΑΤΡΙΚΗ ΜΗΧΑΝΙΚΗ»

MSC POSTGRADUATE PROGRAM IN
"BIOMEDICAL ENGINEERING"

Call for Applications
ACADEMIC YEAR 2026-2027

The School of Medicine, the Department of Computer Science, the Department of Materials Science and Technology of the **University of Crete**, the School of Electrical and Computer Engineering of the **Technical University of Crete**, and the **Foundation for Research and Technology-Hellas (FORTH)** jointly organize the Postgraduate Program in "Biomedical Engineering" in the framework of the Law 4957/2022 (Government Gazette 141 τ.Α'), which leads to a MSc Diploma in "Biomedical Engineering".


The Program leads to a Master's Degree in **Biomedical Engineering** after 15 months of attendance (90 ECTS).

For students who wish to further prepare a research diploma thesis for specialization in one of the following thematic units:




1. *Biofabrication, Molecular Diagnostics and Therapy*
2. *Biomedical Imaging*
3. *Medical Information Systems*

the minimum duration of study is extended to 24 months (120 ECTS).


The official language of the program is English.



ΠΑΝΕΠΙΣΤΗΜΙΟ
ΚΡΗΤΗΣ
UNIVERSITY
OF CRETE

 Home Postgraduate Programs Login  

Apply for a Postgraduate Program

Welcome!
Welcome to Master's and MBA online Applications portal.
Click on Menu [Postgraduate Programs](#) to see available Postgraduate Programs and the application documents (by clicking ).
[Login](#) and select one of the available Postgraduate Programs to submit your Application.

Biomedical Engineering MSc program

UNIVERSITY OF CRETE

Information: postgradsecr@med.uoc.gr
Applications: <https://postgrad.cict.uoc.gr>
Website: <https://mscs.uoc.gr/bme-crete/>



ΠΑΝΕΠΙΣΤΗΜΙΟ ΚΡΗΤΗΣ
UNIVERSITY OF CRETE

A circular inset image showing a microscopic view of cells, likely red blood cells, with a yellowish-brown hue.

**Biomedical
Engineering
MSc program**